

I HEREBY CERTIFY THAT TO THE BEST OF MY KNOWLEDGE, THE SURVEY AND PLAN SHOWN AND DESCRIBED HEREON IS TRUE AND CORRECT. THE ERROR OF CLOSURE IS NO GREATER THAN ONE FOOT IN TEN THOUSAND FEET.
 FEBRUARY 19, 2018
 W.P. PLS

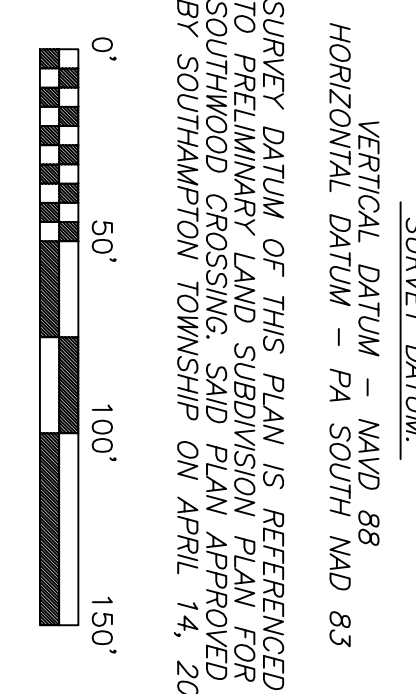
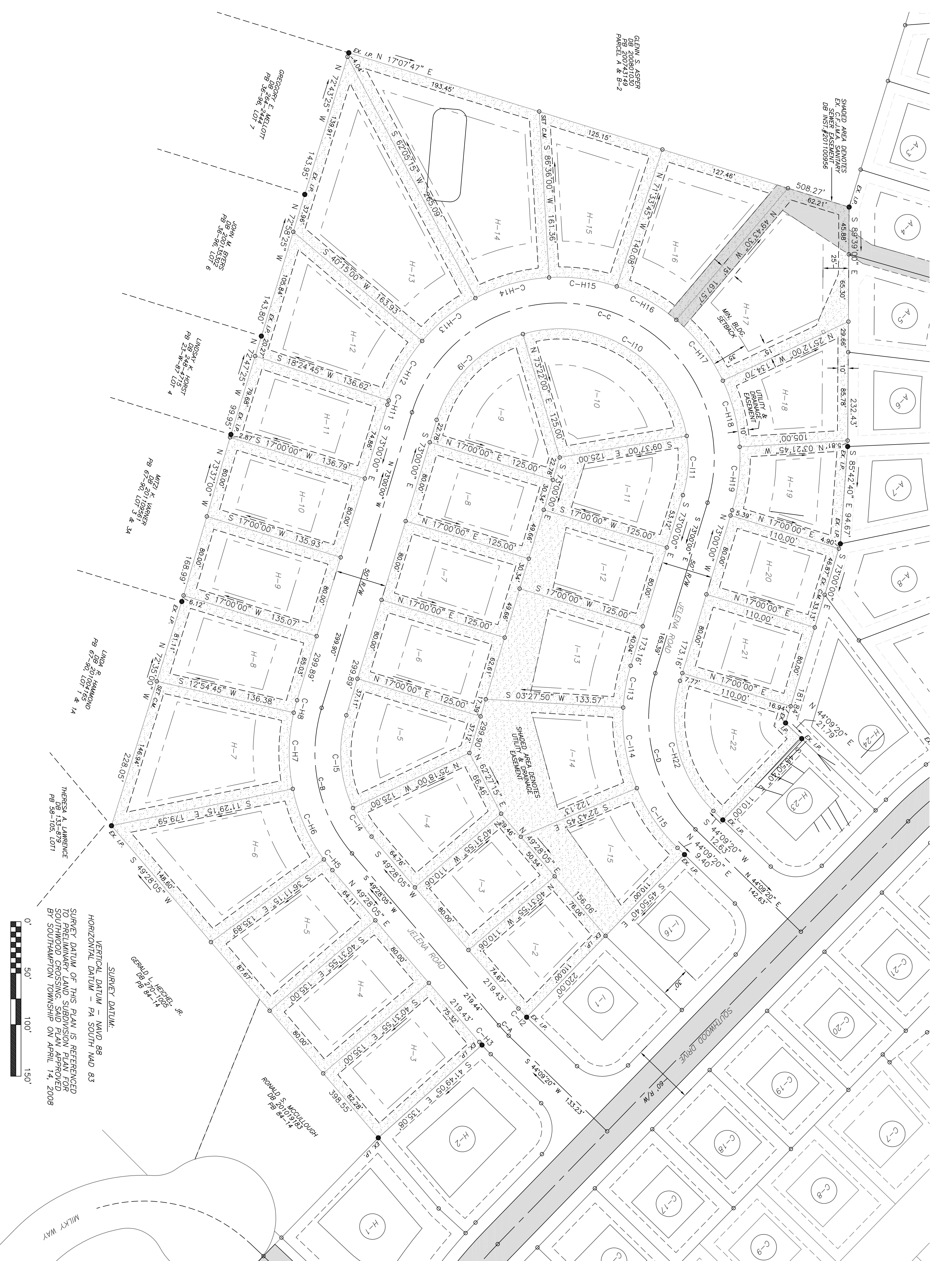
Legend	
Centerline	
Right of Way	
Now or Formerly	
Existing	
Iron Pin	
Nail & Washer	
Spk.	
Rollroad Spike	
Pin on Line	
Drill Hole	
Curve Data Reference	
Line Data Reference	
Benchmark	
Temporary Benchmark	
S.S. Sanitary Sewer Main	
S.S. Sanitary Service Line	
S.S. Cleanout	
Water Main	
Water Service Line	
Gas Line	
Concrete Monument	

AREA			
Lot#	Sq. Feet	Lot#	Sq. Feet
H-3	10,903	I-2	8,933
H-4	10,800	I-3	8,805
H-5	11,145	I-4	9,689
H-6	16,432	I-5	10,407
H-7	16,285	I-6	10,000
H-8	11,145	I-7	10,000
H-9	10,840	I-8	10,000
H-10	10,909	I-9	10,533
H-11	11,052	I-10	13,229
H-12	13,804	I-11	10,269
H-13	21,917	I-12	10,000
H-14	24,947	I-13	12,221
H-15	14,239	I-14	15,403
H-16	18,776	I-15	11,424
H-17	18,776		
H-18	10,292		
H-19	9,048		
H-20	8,800		
H-21	8,800		
H-22	10,676		

LOT & CENTERLINE CURVE DATA			
Lot#	Sq. Feet	Curve Data	Area
C-1	175.00'	3.93'	3.93'
C-2	175.00'	13.27'	13.27'
C-3	175.00'	75.44'	75.44'
C-4	175.00'	124.53'	124.53'
C-5	175.00'	12.48'	12.48'
C-6	175.00'	4.31'	4.31'
C-7	175.00'	66.70'	66.70'
C-8	175.00'	74.87'	74.87'
C-9	175.00'	66.70'	66.70'
C-10	175.00'	66.70'	66.70'
C-11	175.00'	74.91'	74.91'
C-12	175.00'	62.19'	62.19'
C-13	175.00'	137.11'	137.11'
C-14	175.00'	54.99'	54.99'
C-15	175.00'	11.99'	11.99'
C-16	175.00'	33.24'	33.24'
C-17	175.00'	122.87'	122.87'
C-18	175.00'	211.66'	211.66'
C-19	175.00'	58.07'	58.07'
C-20	175.00'	41.34'	41.34'
C-21	175.00'	80.00'	80.00'
C-22	175.00'	20.60'	20.60'
C-23	175.00'	13.91'	13.91'
C-24	175.00'	150.62'	150.62'
C-25	175.00'	471.24'	471.24'
C-26	175.00'	164.53'	164.53'

LOT LINE DATA			
Lot#	Sq. Feet	Lot#	Sq. Feet
L-1	42,231.5'	L-110	4,550.40'
L-2	25,470.0'	L-111	4,550.40'
L-3	44,092.0'	L-112	4,550.40'
L-4	44,092.0'	L-113	4,550.40'
L-5	42,231.5'	L-114	4,550.40'
L-6	42,231.5'	L-115	4,550.40'
L-7	42,231.5'	L-116	4,550.40'
L-8	42,231.5'	L-117	4,550.40'
L-9	42,231.5'	L-118	4,550.40'
L-10	42,231.5'	L-119	4,550.40'
L-11	42,231.5'	L-120	4,550.40'
L-12	42,231.5'	L-121	4,550.40'
L-13	42,231.5'	L-122	4,550.40'
L-14	42,231.5'	L-123	4,550.40'
L-15	42,231.5'	L-124	4,550.40'
L-16	42,231.5'	L-125	4,550.40'
L-17	42,231.5'	L-126	4,550.40'
L-18	42,231.5'	L-127	4,550.40'
L-19	42,231.5'	L-128	4,550.40'
L-20	42,231.5'	L-129	4,550.40'
L-21	42,231.5'	L-130	4,550.40'
L-22	42,231.5'	L-131	4,550.40'
L-23	42,231.5'	L-132	4,550.40'
L-24	42,231.5'	L-133	4,550.40'
L-25	42,231.5'	L-134	4,550.40'
L-26	42,231.5'	L-135	4,550.40'
L-27	42,231.5'	L-136	4,550.40'
L-28	42,231.5'	L-137	4,550.40'
L-29	42,231.5'	L-138	4,550.40'
L-30	42,231.5'	L-139	4,550.40'
L-31	42,231.5'	L-140	4,550.40'

LOT MONUMENTATION LEGEND
 O - Denotes Set I.P. unless otherwise noted. (Lots-Phase 3)
 O - Denotes Point unless otherwise noted. (Streets/Drainage Easement-Phase 3)



RINE LAND DEVELOPMENT, INC.
 (OWNER/DEVELOPER)

SHEET 2 OF 11 SHEETS
 FINAL SUBDIVISION OF LAND
 FOR
 SOUTHWOOD CROSSING
 PARCEL "E" - PHASE 3
 SITUATE IN
 SOUTHAMPTON TOWNSHIP
 CUMBERLAND COUNTY, PENNSYLVANIA

No.	Date	Revision	By

Scale 1"=50'
 Date 2-19-2018
 Drawn JAM
 Computed JAM
 Checked DRZ
 File No. 2034-35

Curfman & Zullinger
 Surveying Inc.
 Surveying & Subdivision & Stake out
 556 Lincoln Way East
 Chambersburg, PA 17201
 Phone (717-261-0749)
 Fax (717-261-1705)